



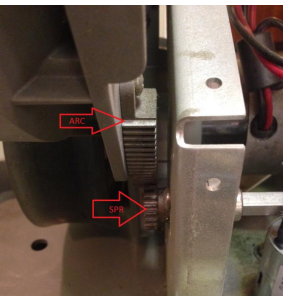


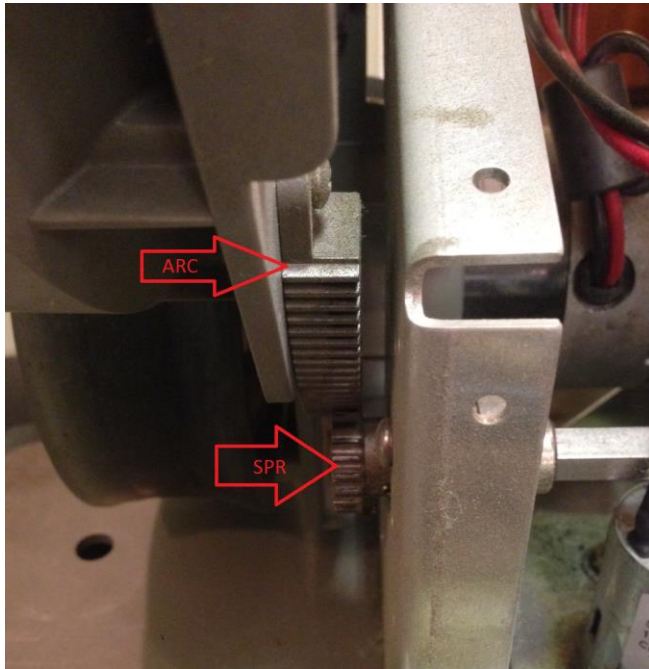
Trouble Shooting an Elevation Issue for Elite Liberty and Pickle machines.

Step	Description	Tools	Picture
	<p>Models that Apply: Elite Freedom, Liberty.</p> <p>Most customers will call in explain about their elevation not functioning in these ways:</p> <p><i>“My elevation Gets stuck”</i>  <i>“My elevation moves up by itself”</i>  <i>“My elevation moves up by itself when it shoots balls”</i></p> <p>This instruction will guide you through checking various components with-in these 2 units to ensure that everything is set up properly.</p>	<p>Crescent Wrench</p> <p>P2 Phillips Screw Driver/ Screw Gun.</p>	
<p><b>1</b></p>	<p style="text-align: center;"><b>Checking Manual Elevation Function</b></p> <p><b>Step 1.)</b> Ensure the elevation is moving as designed. To move the elevation pull away from the machine using the Rosetta knob on the right hand side of the machine. Turn clockwise to raise the elevation. Turn counter-clockwise to lower the elevation. When the desired elevation is reached, push the Rosetta knob back toward the machine. You should feel resistance of the elevation so it does not move up or down.</p> <p><b>Step 2.)</b> Try to adjust the elevation by reaching into the front of the machine by grabbing onto server motors in front of the machine (to the left of the wheels). Pull the top motor toward you, and push the bottom one away. If the elevation slips easily then there might be an issue with the elevation. If you feel resistance, that is a good sign. <b>NOTE: Do not continue to push and pull if you feel resistance, as</b></p>	<p>Crescent Wrench</p> <p>P2 Phillips Screw Driver/ Screw Gun.</p>	

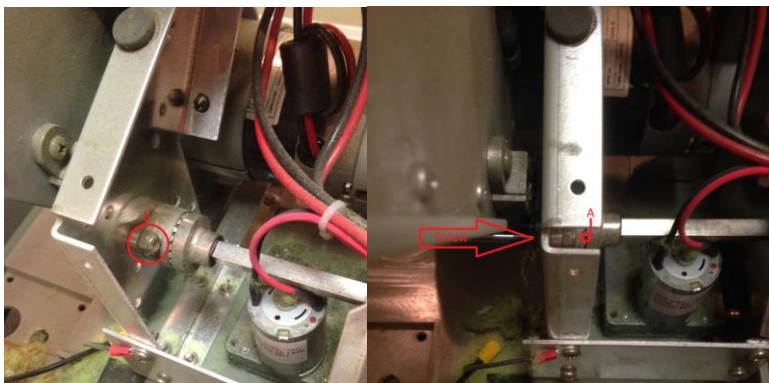
Trouble Shooting an Elevation Issue for Elite Liberty and Pickle machines.

	<p><i>you do not want to put un necessary pressure on the spring.</i></p>		
<p>2</p>	<p style="text-align: center;"><b>Removing The Case</b></p> <p><b>Step 1.)</b> Unscrew the (6) Phillips-head screws along the bottom of the red case where it attaches to the chassis of the machine. (2-front, 2-rear, one on each side) Remember to also unscrew the Elevation knob on the right hand side of the machine.</p> <p><b>Step 2.)</b> Lift the red case off the chassis and set it aside next to the machine.</p>	<p>Crescent Wrench</p> <p>P2 Phillips Screw Driver/ Screw Gun.</p>	 <p>Case Removed</p>  <p>Case Screws (Front &amp; Rear)</p>  <p>Case Screws (Side)</p>  <p>Rosetta Elevation Knob Screw.</p>
<p>3</p>	<p style="text-align: center;"><b>Checking The Elevation Spur and Rack Gear Alignment</b></p> <p><b>Step 1.)</b> Check the alignment of the Rack Gear (as seen on Yoke Assembly, marked as ARC in diagram), and the Spur Gear (as seen on Elevation Assembly, marked as SPR in diagram) are lined up as shown below. <b>Note:</b> <i>If the gears are not lined up as shown below, are look miss aligned, then an RA will be needed, contact Customer Service at 1-800-526-4041.)</i></p>	<p>Crescent Wrench</p> <p>P2 Phillips Screw Driver/ Screw Gun.</p>	 <p>Rack Gear and Spur Gear placement.</p>

Trouble Shooting an Elevation Issue for Elite Liberty and Pickle machines.



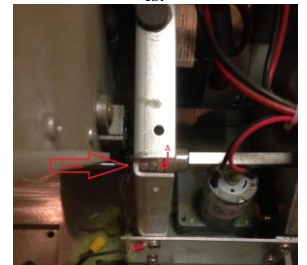
**Step 2.)** Using a Crescent Wrench, grab on to the nut (marked as item A. in the diagram), making sure you have a tight grip. On the opposite end, use your drill gun with a Phillips bit, and or a screw driver with a Phillips bit to loosen the nut. (NOTE: *Do NOT unscrew all the way.*)



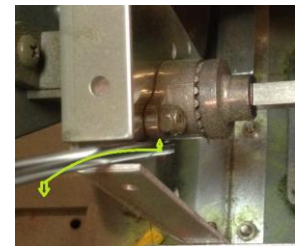
**Step 3.)** Push the Elevation Assembly so that the teeth from the gear of the Elevation Assembly line up with the gear from the Yoke Assembly. (See diagram below).



A. of diagram Showing where nut is.



Screw location and nut location.



Pushing Elevation Gear Assembly in place.

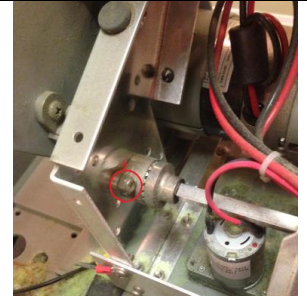
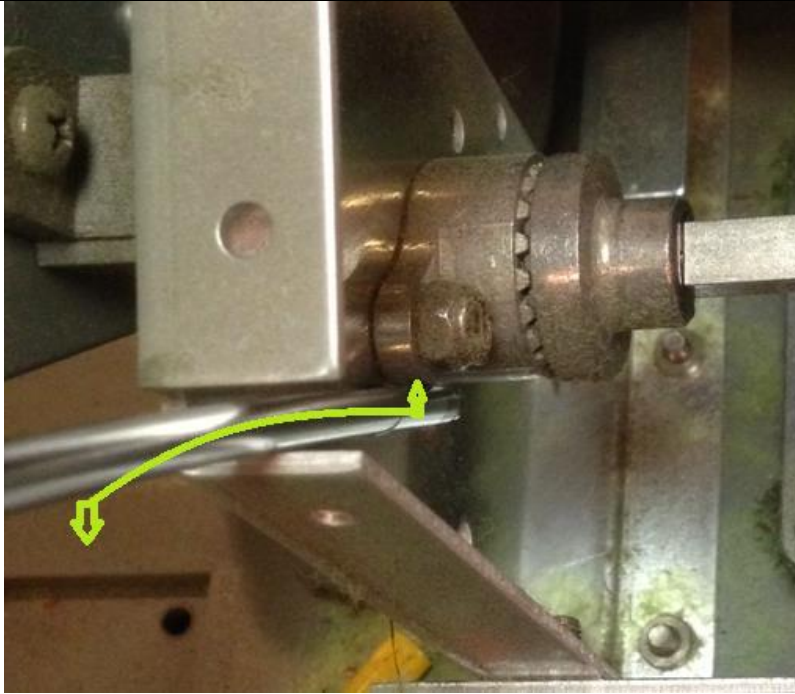


Gear lined up.

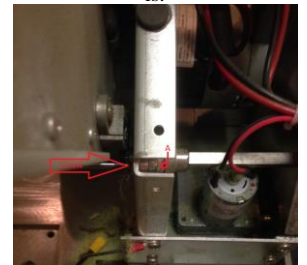


Gear lined up.

Trouble Shooting an Elevation Issue for Elite Liberty and Pickle machines.



A. of diagram Showing where nut is.

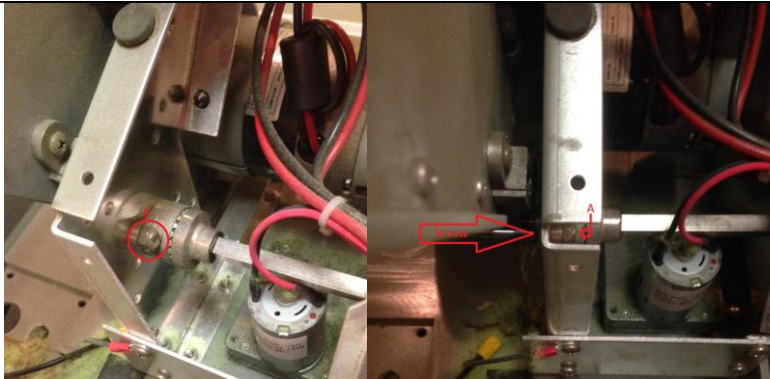


Screw location and nut location.



**Step 4.)** Using a Crescent Wrench, grab on to the nut (marked as item A. in the diagram), making sure you have a tight grip. On the opposite end, use your drill gun with a Phillips bit, and or a screw driver with a Phillips bit to tighten the nut. This should lock the elevation in place.

Trouble Shooting an Elevation Issue for Elite Liberty and Pickle machines.



**Step 5.)** Attach Elevation Knob (previously removed when taking off the Red Case). Adjust the elevation to ensure that the elevation moves up and down at full range, and does not slip. Unscrew Elevation knob after testing.



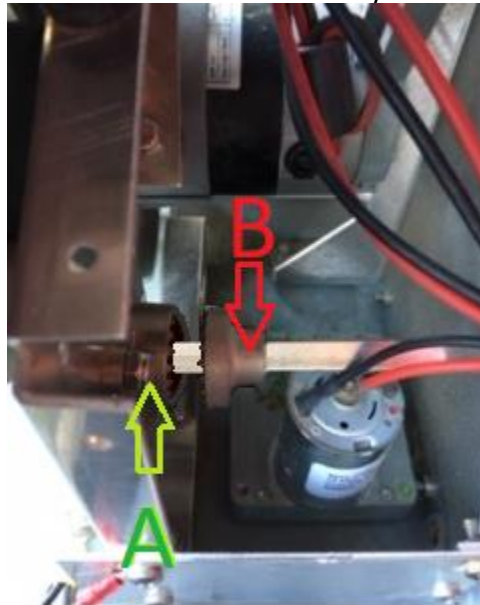
**If the elevation still slips, or moves freely, then you will need to check to see if the c-clip is**

Trouble Shooting an Elevation Issue for Elite Liberty and Pickle machines.

**missing.**

**Checking the C-clip**

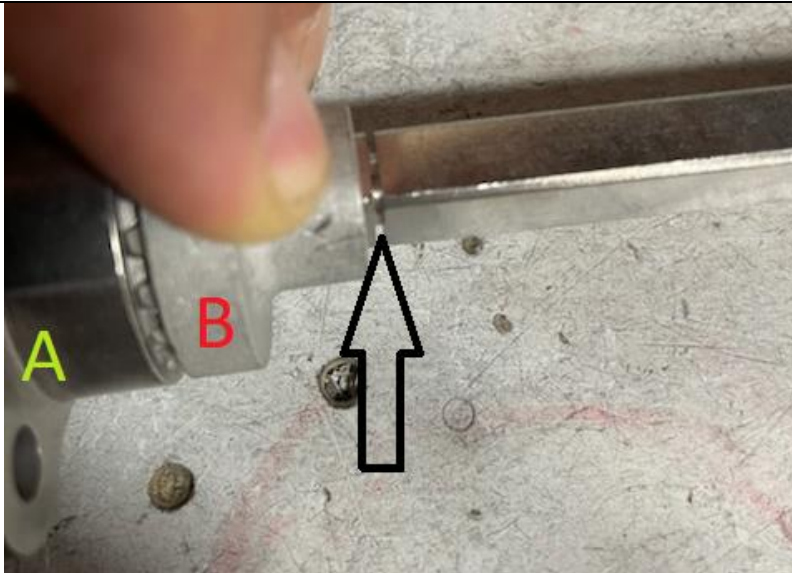
**Step 1.)** Looking down at the elevation shaft towards the left (center of the machine) you will see the Elevation Mount (marked in Green A) and the Elevation Gear (marked in Red B). If the Elevation Gear can slide towards the right (towards the Rosetta Knob) then the C-clip is missing. *You will need to contact Customer Service for a new C-clip item E535.*



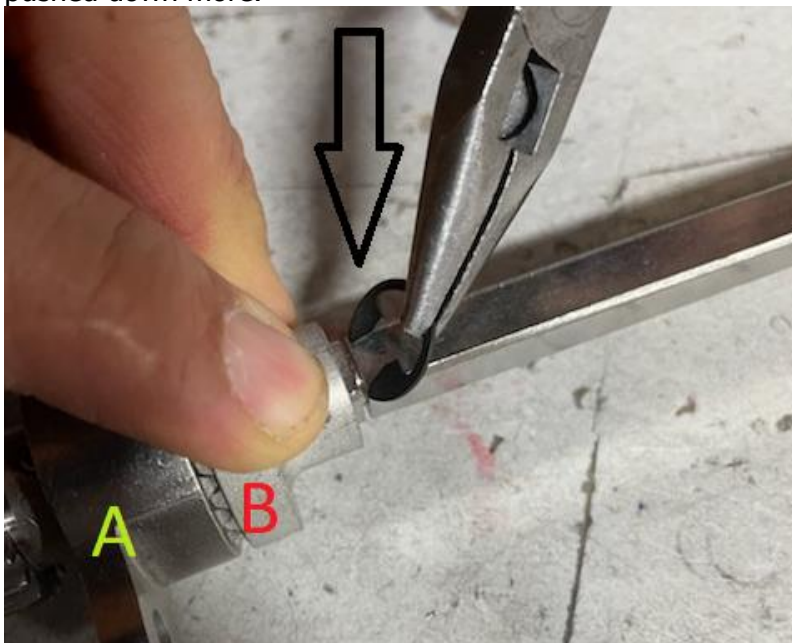
**Installing the C-Clip**

**Step 1.)** Make sure you pull on the Rosetta Knob so that the Elevation Gear (marked in Red B) is as far left as can be (pushed against the Elevation Mount marked in Green A). This will expose the cut out in the elevation shaft, where the C-clip goes.

Trouble Shooting an Elevation Issue for Elite Liberty and Pickle machines.



**Step 2.)** Using your finger or thumb, push the C-clip in place, then use a hammer to gently tap it until the C-Clip is all the way in the groove, and does not come out. You want to make sure that the C-clip is slightly below the Elevation Mount (see image below). If it is above, it will need to be pushed down more.



Trouble Shooting an Elevation Issue for Elite Liberty and Pickle machines.



**Step 3.)** You should feel the tension when you pull on the Rosetta Knob, and when you release it, you should see the teeth on the Elevation Mount, and Elevation Gear, go back together in place.

**Re-attaching The Case**

**Step 1.)** Lift the red case and lower until it is covering the whole Chassis of the machine.

**4 Step 2.)** Screw the (6) Phillips-head screws along the bottom of the red case where it attaches to the chassis of the machine. (2-front, 2-rear, one on each side) Screw in the Elevation Knob on the right hand side of the machine.

Crescent Wrench

P2 Phillips Screw Driver/ Screw Gun.



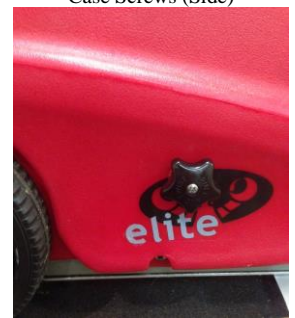
Case Removed



Case Screws (Front & Rear)



Case Screws (Side)



Rosetta Elevation Knob Screw.