

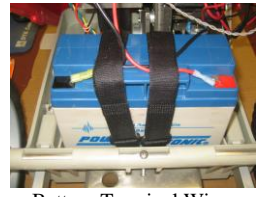




## TS - My Machine Won't Turn On

*Objective:* To troubleshoot machines that will not turn on (Models that apply: Elite Liberty, 1,2,3, Pickle and Pickle 2)

Action		Pictures
<p>The more common statements regarding powering issues are...</p> <p><b>“My machine will not turn on”</b>  <b>“I flip the power switch and nothing happens”</b></p> <p>This indicates one of the following:  <b>The reset switch has tripped.</b>  <b>The main battery wires are disconnected.</b></p>		
<p><b>Step 1 – Check Reset Switch</b></p> <ol style="list-style-type: none"> <li>1. Check if the reset switch has been tripped. If it is showing any white around the reset button, press it back in and turn the machine on.</li> <li>2. On Elite models (EL0L-EL03, Pickle &amp; Pickle 2) the reset switch is located on the front of the control panel.</li> <li>3. (<i>*When tripped the Reset Switch will expose 1/16<sup>th</sup> of an inch of white on its underbelly.</i>)</li> </ol> <p><b>If the reset switch is not tripped and the machine still does not turn on then go to Step 2</b></p>		 <p style="text-align: center;">Reset Switch (EL0L-EL03, Pickle &amp; Pickle 2)</p>
<p><b>Step 2 – Check Main Battery Wires</b></p> <ol style="list-style-type: none"> <li>1. Check to make sure the main battery wires are securely attached to the battery terminals. To do this you will need a phillips-head screw driver.</li> <li>2. Unscrew the control panel and pull it out and to the side being careful not to disconnect any wires.</li> <li>3. Through the square cut-out in the red case you will see the battery just inside the machine.</li> <li>4. Check to make sure the battery or main power wires are firmly connected to the battery terminals. Red wire to positive terminal, black wire to negative terminal.</li> <li>5. Reconnect loose battery wires and restart</li> </ol>		 <p style="text-align: center;">Control Panel – Open</p>  <p style="text-align: center;">Battery Terminal Wires</p>

## TS - My Machine Won't Turn On

machine.

Below are the main battery wire connections for each model.

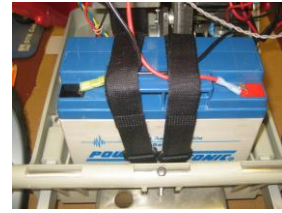
### Elite 1-3 (EL01, EL02, EL03, Pickle & Pickle 2)

1. Black or negative wire connects from the black battery tab to the back of the control panel on one of the tabs labeled “Bat Neg” (battery negative)
2. Red or positive battery wire connects to the red battery tab and is connected into one of the tabs on the back of the reset switch.

### Elite Liberty (EL0L)

1. Black or negative battery wire connects from the battery to the back of the control panel on one of the tabs labeled “Bat Neg” (battery negative)
2. Red or positive battery wire connects to one of the tabs on the back of the reset switch.

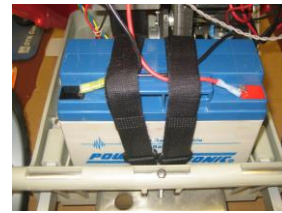
Once you have determined that the power wires are connected properly and if the machine still does not turn on then the battery is depleted and needs to be charged.



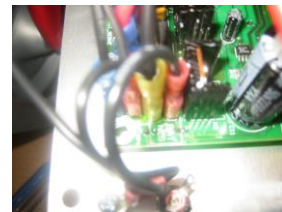
Battery Terminal Wires elite 1 2 3 and pickle 2.



Battery Terminal Wires Elite Liberty and Pickle



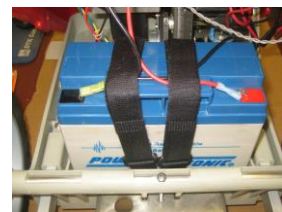
Battery Terminal Wires



“Bat Neg” connection





Back of Reset Switch



Battery Terminal Wires



## TS - My Machine Won't Turn On

			 <p>"Bat Neg" connection</p>  <p>Back of Reset Switch</p>
	<p><b>If the problem still continues, contact Technical Support at <a href="mailto:support@lobstersports.com">support@lobstersports.com</a> or call Technical Support at 1-800-526-4041 ext.14.</b></p>		