



# Repair Instructions

## Replacing and Installing a Elevation Spur Gear

Elite Models that Apply: EL04-EL05LE

Step	Description	Tools	Picture
1	<p style="text-align: center;"><b>Removing The Case</b></p> <p><b>Step 1.)</b> Unscrew the (6) Phillips-head screws along the bottom of the red case where it attaches to the chassis of the machine. (2-front, 2-rear, one on each side)</p> <p><b>Step 2.)</b> Lift the red case off the chassis and set it aside.</p>	Phillips Screw Driver	 <p>Case Screws (Front &amp; Rear)</p> <p>Case Screws (Side)</p> <p>Case Removed</p>
2	<p style="text-align: center;"><b>Removing The Yoke Assembly</b></p> <p><b>Step 1.)</b> Take off your server wheels by unscrewing the set screw, and sliding the wheels off of the server motor shafts.</p> <p><b>Step 2.)</b> With the front end of the machine facing you (the pointer closest to you, and the handle furthest from you), remove both of the server wheels.</p> <p><b>Step 3.)</b> Passing through the center of the Yoke and the davit assembly is the Yoke Bolt. (This bolt has a nut holding it on the end of the Davit Right). Using a Crescent Wrench and a 9/16" Wrench, unscrew and remove the Yoke Bolt, the Small and Larger Spacer, and the 3 to 5 washers. <i>*(Carefully set these in separate safe location for later use.)*</i></p> <p><b>Step 4.)</b> Cut all the zip ties holding the wires together</p>	1/8" Allen Crescent Wrench 9/16" Wrench	 <p>The Server wheels.</p> <p>The Yoke Bolt being removed.</p>

# Repair Instructions

## Replacing and Installing a Elevation Spur Gear

and then CAREFULLY remove the Yoke Assembly off of the Davit Assembly and set it aside.

### Removing and Installing The Spur Gear

**Step 1.)** Using a 1/8 Pin Punch, line up the smaller end of the pin punch with the hole on the inside of the spur gear.



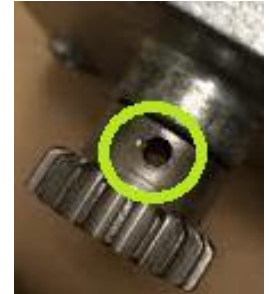
Spring Pin Hole on Spur Gear and Motor Shaft.

3



1/8 Pin Punch

**Step 2.)** Using a Hammer, hammer out the old spring pin, and pull off the spur gear.



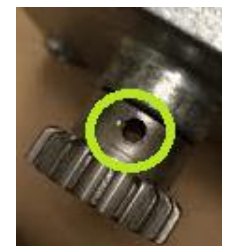
Spring Pin Hole on Spur Gear and Motor Shaft.



Spur Gear marked in Green.



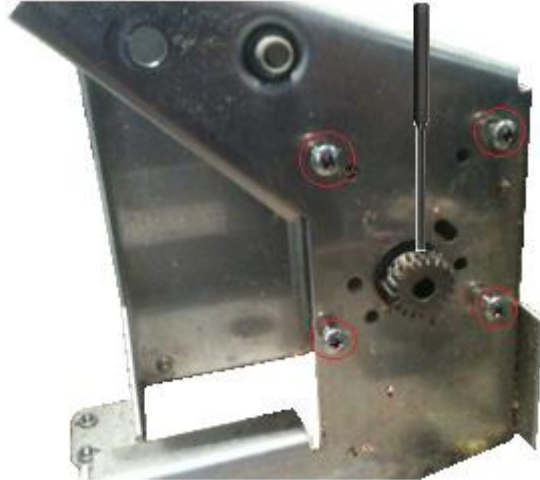
1/8 Pin Punch



Spring Pin Hole on Spur Gear and Motor Shaft.

# Repair Instructions

## Replacing and Installing a Elevation Spur Gear



Removing old Spur Gear and Spring Pin using hammer and 1/8 Pin Punch.

**Step 3.)** Line up the new spur gear and spring pin with the hole in the elevation motor shaft. You can use channel locks to push it in, or tap it with the hammer to get it started. Continue tapping until the spring pin is all the way thru and showing in the hole on the other side.



Spring Pin Hole on Spur Gear and Motor Shaft.



Hammering spring pin into Spur Gear and Motor Shaft.



Spring Pin and Spur gear flush.

# Repair Instructions

## Replacing and Installing a Elevation Spur Gear



Hammering Spring Pin into Spur Gear and Motor Shaft.



Spring Pin and Spur gear flush.

### Re-Attaching the Yoke

**Step 1.)** Take the yoke with one hand, (make sure that the pointer is facing you, and the top of the chute or slide, is facing away from you.) and slide the yoke bolt threw the yoke, passing through the first metal davit piece.

4 **Step 2.)** Put 3 washers on the threaded portion of the yoke bolt, and then pass the yoke bolt threw the plastic long spacer until it exits out of the second metal davit piece.

**Step 3.)** Put the washer over the threaded yoke bolt end, and then continue to fasten the yoke bolt nut until it is slightly snug. **DO NOT OVER TIGHTEN OR YOUR ELEVATION WILL NOT WORK PROPERLY!!!**

1/8" Allen

Crescent  
Wrench

9/16" Wrench






Yoke being fasten to Davit Assembly by Yoke Bolt..



# Repair Instructions

## Replacing and Installing a Elevation Spur Gear

	<p><b>Step 4.)</b> Put your server wheels on, make sure that the set screw is facing out away from the server motors.</p>		<p>The Server wheels.</p>
5	<p style="text-align: center;"><b>Re-attaching The Case</b></p> <p><b>Step 1.)</b> Lift the red case onto the Chassis. Once the case is on-top of the Chassis, take the control panel, and pull it through the hole. Lower the rest of the case until it is covering the whole Chassis of the machine.</p> <p><b>Step 2.)</b> Screw the (6) Philips-head screws along the bottom of the red case where it attaches to the chassis of the machine. (2-front, 2-rear, one on each side)</p>	<p>Phillips Screw Driver</p>	 <p>Case Removed</p>  <p>Case Screws (Front &amp; Rear)</p>  <p>Case Screws (Side)</p>

<b>How to Order Elite Replacement Parts</b>	<b>Elite Parts</b>
<p><b>Website:</b> <a href="http://www.lobstersports.com">http://www.lobstersports.com</a>  <b>Email:</b> <a href="mailto:sales@lobstersports.com">sales@lobstersports.com</a>  <b>Phone:</b> 800.526.4041  <b>Fax:</b> 818.764.6061          We accept Visa, MasterCard or Discover &amp; PayPal</p>	<p><b>For Elite Freedom:</b></p>